

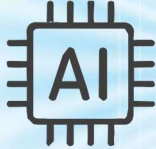
# AIR series A.I. Dash Cameras

## The ALL-IN-ONE SOLUTION



Video

Advanced Driver Assistance Systems (ADAS)  
Driver Management System (DMS)



Artificial  
Intelligence



Edge-AI Safety



Telematics

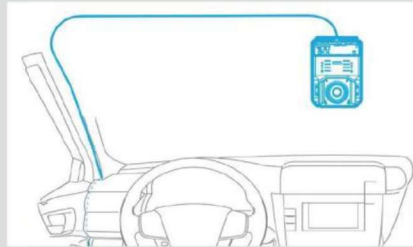
- Real-time Coaching
- Real-time Coaching
- AI-Native Technology

### Real-time look-ins



Real-time check-ins Unlimited live access Coaching across your fleet.

### Easy Installation



All-in-one solution requires no calibration. Plug-and-Play makes setup a breeze. Easily expandable: Additional plug-in monitoring cameras available.

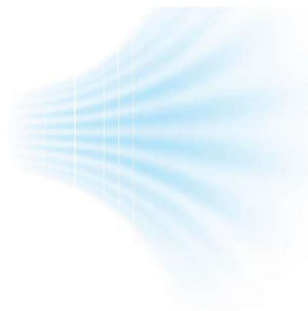
### One Device One Service Plan



**All-in-One**

Combining AI, Video, and telematics into one monthly plan. No linking accounts or calibrating devices. The features you need in one single monthly plan. Road-tested and fleet-proven, your one solution.

Vehicle Tracking  
Geofencing  
Alerts and Reports  
Vehicle Recovery



Telematics

# AIR series A.I. Dash Cameras

Dimensions	
Length	3.4 inches, 87 mm
Height	5 inches, 726 mm
Width	7.8 inches, 46 mm
Weight	7.5 ounces, 272 g

Processor	
Chipset	Ambarella CV
CPU	Quad Core A53 Arm Processor
NPU	Hardware, CVFlow AI Engine

Power	
Cable Options	Direct wire, OBD, or J1939 9-pin type II
Voltage	72V ( Operating), 70.2V /36.0V (Minimum, Maximum)
4G Current	8 mA (standby), 7000 mA (Record Peak Current)
Camera Connection	USB-C
Backup Battery	600 mAH, up to 70 min runtime

Camera Module	
Lens	7080P HD
Image Sensor	CMOS
High Dynamic Range	Supported
Video Resolution	7920x1080
FOV	Horizontal 728.6°. Vertical 69.4°. Diagonal 753.4°
Video Encoding	High Efficiency H.26S, H.264
Active IR LEDs	Included for Night Vision Support

Wi-Fi	
Frequency Band	2.4GHz
WLAN compliant	802.11 a/b/g/n
Modes	Access Point, Wifi-direct, Wifi hotspot



OPS Module	
Central Frequency	1575.42 MHz
Update Rate	1 Hz, up to 4Hz
Supported Protocols	GPS, GLONASS, A-GPS Antenna Type - Internal, Ceramic, Active Antenna Size -25x25x4 mm
Maximum Height	50000 m
Maximum Speed	.500 m/s
Cold/Hot Start Time	55s Average/ 4s Average

AUX	
Camera Inputs	Up to 2 (AIR-II)
FOV	Ultra-wide, 206° Diagonal
Other	IP69K camera, IP67 cable

Sensor Suite	
Accelerometer	3-Axis, 50-100 Hz
Gyroscope	3-Axis, 50-100 Hz

Storage	
SD Card	MicroSD up to 572 GB Class 10 High Endurance

Interface	
Status LEDs	Camera, Power, Network, Expansion
Buttons	Power/Factory Reset/Manual Event Clip
Audio	Speaker, Microphone

Standard Compliance & Certifications	
CE/FCC/PTCRB	Fully Compliant
Carrier Certification	AT&T

Environmental Reliability	
Operating Temperature	-20°C to+ 70°C (Parking Mode), -20°C to +45°C (Driving Mode)
Operating Humidity Range	0% RH, 3 hours Continual Operation
Drop Test	Up to 100cm, Six Face, Wooden Surface
Vibration Test	Speed up to 210 RPM, 3 Perpendicular Faces, 30 minutes/face

	AIR2	AIR1
Road Camera	✓	✓
Cabin Camera	✓	NA
Additional Cameras (Optional)	2	NA