

NIGHTRIDE

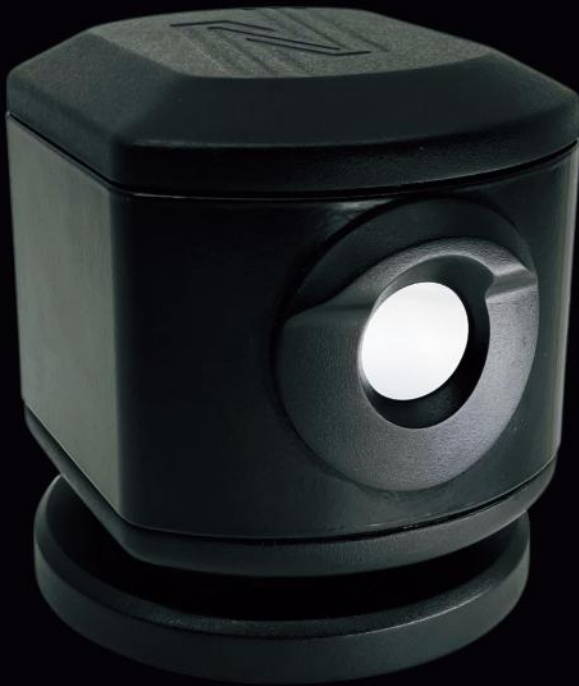
== THERMAL ==



SENTINEL

NIGHTRIDE

SENTINEL



	SENTINEL	SENTINEL 640
Vehicle Specific Mount	Yes	Yes
Mounting	Light Bar, Roof, Fender	Light Bar, Roof, Fender
360° Pan	Yes	Yes
Sealed Design	IP69	IP69
Power Consumption	4W max	4W max
Power Requirement	12-16 VDC	12-16 VDC
Operating Temperature	-40°F - +140°F	-40°F - +140°F
Lens	13MM	13MM
Resolution	384 X 288 uncooled microbolometer	640 X 512 uncooled microbolometer
Lens Heater	Yes	Yes
Field of View	28° (H)	28° (H)
Frames Per Sec	25hz	25hz
Sensor Pixel Size	17 micron	12 micron
Color Palettes	black, white, green, rainbow	black, white, green, rainbow
Visibility	480 yards	660 yards
Digital Zoom	1x, 2x,4x,8x	1x, 2x,4x,8x
Object Focus Range	20 feet to infinity	20 feet to infinity
Focusing Mechanism	Fixed	Fixed

WHAT SETS IT APART:

- Compact size (100mm x 95mm x 100mm)
- Low profile sleek design
- Flexible mechanical interface
- Remote software upgrade capabilities

FEATURES:

- Fender, roof or light bar mounted
- Wi-Fi hotspot connection to display device
- Remote control 360° pan/zoom
- Always recording or event recording

contact@getnightride.com | www.getnightride.com | 347-509-5880

"NightRide is affordable and easy to install right out of the box. We can see everything with our NightRide – through pitch black roads, through smoke, identifying points of heat. Before we had NightRide, we almost hit a deer on a response call and narrowly missed injury. There's a level of confidence now that using NightRide gives that wasn't there before. Plus, it works immediately – we love that there's nothing to switch on when we're responding to a fire – it starts working before we get out of the driveway. Every department could benefit from having a NightRide."

- KEVIN M., ARKANSAS FIRE CHIEF



DISCREET, FULL SITUATIONAL AWARENESS