



Contents

Identification	<u>3</u>
Pre Installation	<u>4</u>
Installation	<u>5</u>
Configuration	<u>12</u>
Troubleshooting	<u>14</u>
Contact Us	<u>15</u>



EZ750

VS800



VS800 Aux Camera (driver) VS800 Kit harness



P247

Accessories



T6 tool & extra screw

Driver Camera Retainer

Cable clips

Alcohol pad

Device Identification

Product Name: XXXXX

Certified Model Name: FT7XX-XXXX-XX
FCC ID: 2AP3PXXXXX IC: 5248S-XXXXX
Contains IC: 10224A-XXXXXXXXXX
Contains FCC ID: XMRXXXXXXXXXX



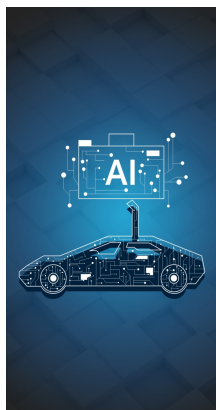
SN/IMEI: 123456789012345

(On the left side of the device)

Record the **IMEI number** of the EZ750 prior to installation

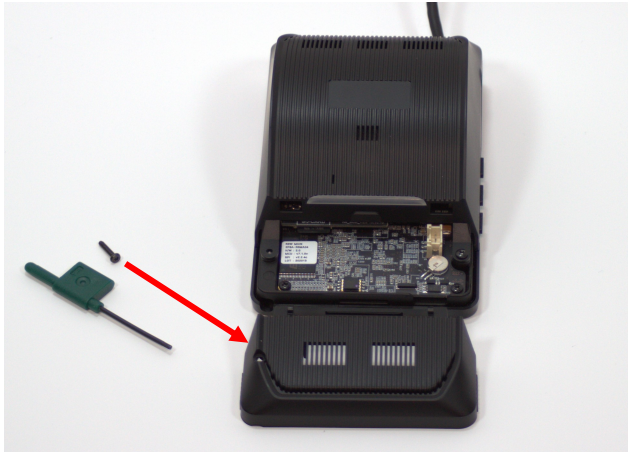


Record the **serial number** of the VS800 prior to install

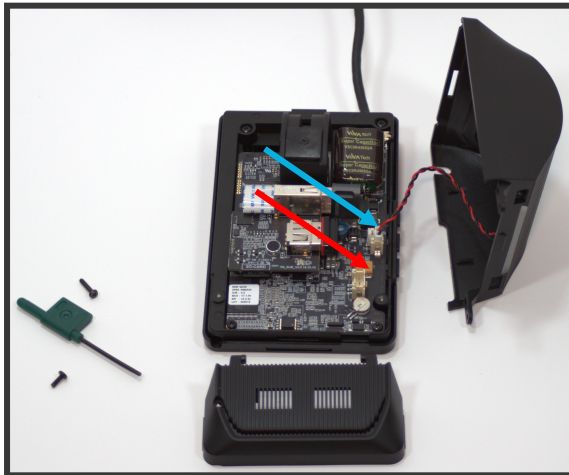


Download & install AI Fleet Cam app to your device

VS800 Installation



- Remove **T6 screw** using provided tool and set aside
- Slide cover to remove and set aside



- Remove **P1 screw** to release and remove top cover
- Unplug the **buzzer**
- Set aside top cover

VS800 Installation



Select location for camera placement

- As close to center as possible
- No more than 20 cm to right from center
- Not out side of rearview boundary left of center
- Above AS1 line
- Ideal Road facing camera placement
- Ideal Driver facing camera placement



Clean area (including area for driver facing camera) using alcohol wipe provided



- Remove adhesive backing and firmly press camera into place.
- Hold for 30 seconds
- Glass must be dry—run vehicle defroster on high if moisture is present
- Recommended application temperature is 70°F –100°F
 - Warm or cool windshield as needed for application
- Camera will be adjusted via app at the end of installation
- Camera will be adjusted and set by loosening the **P1 screw here**
- ***Do not reinstall the cover yet!***

VS800 Installation



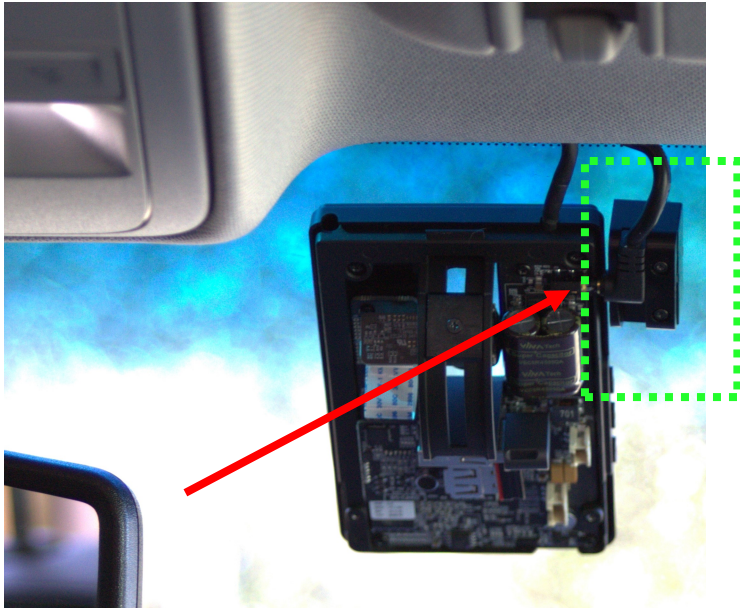
Select location for driver facing camera placement

- Left of center with a clear line of sight
- Above AS1 line
- Camera rotates to align
- Ideal Driver facing camera placement



Remove adhesive backing and firmly press camera into place.

- Hold for 30 seconds
- Remove protective film from lens



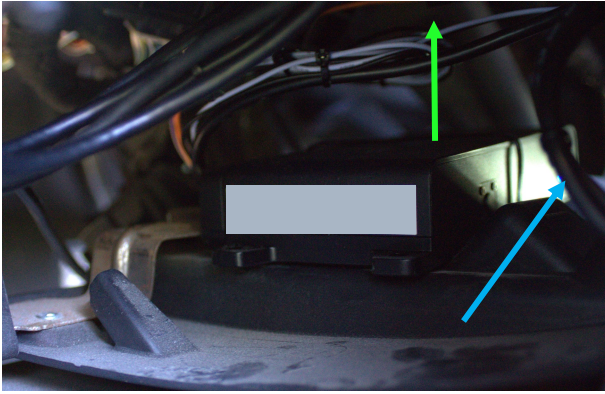
- Route and plug driver facing camera into main camera
- Install retainer
- Install cable clips as needed
- ***Do Not Reinstall the cover yet!***

VS800 Installation

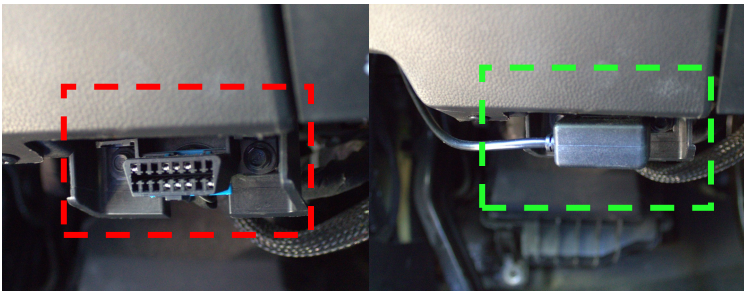


- Route cables neatly towards where tracking device is to be installed
- When routing cables stay clear of any moving parts, ex. — Steering shaft, pedals, airbags
- Secure using wire ties as needed
- **DO NOT OBSTRUCT AIRBAGS!**

EZ750 Installation

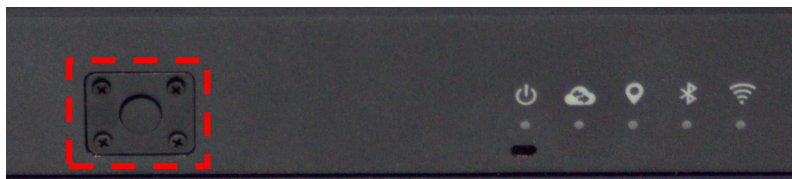


- Select location for tracking device
- Ensure top of device has a clear line of sight to the sky
- Device will function properly through most materials with the exception of metal. **Do Not Place Directly Under Metal!**
- Device is required to be mechanically secured Ex—wire ties, screws, VHB tape (Wire tied to a panel in this example)



- Locate OBDII port
- Plug diagnostic harness (P247) into OBDII port
- Route harness neatly towards tracking unit location
- **When routing cables stay clear of any moving parts, ex.—Steering shaft, pedals, airbags**
- Secure using wire ties as needed

EZ750 Multi-function Button



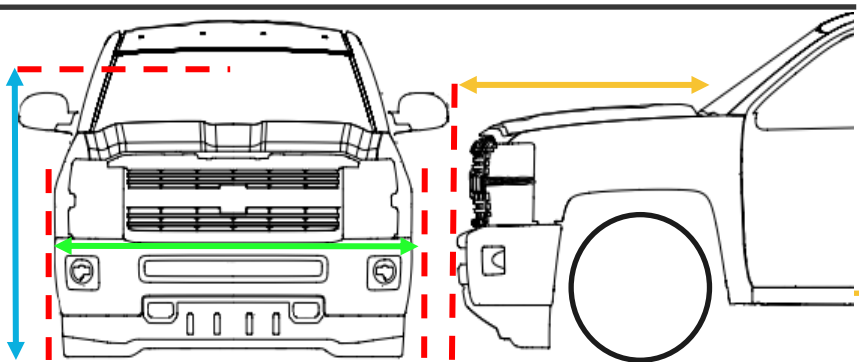
Press Duration	Action
2-4 seconds	Power on Check for errors (see pg 16)
5-10 seconds	Sync settings w/ cloud device
>15 seconds	Power down (if unlocked and disconnected from power)

EZ750 LED Status – Live



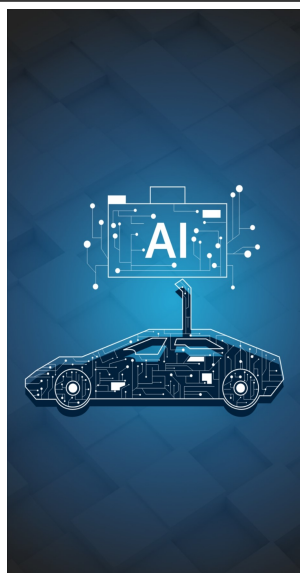
	GPS	Data	Power
Off	GPS off	Modem off	Device off or sleeping
On	GPS has fix	Connected	System awake
Rapid Flash	GPS acquiring fix	Transferring data	Transferring diagnostic data
Medium Flash	Searching for satellites	Searching for network	Device unlocked (3x4flashes)

Measure vehicle



- Measure and record the following
 - Vehicle width (outside front wheel to wheel)
 - Distance from front bumper to base of windshield
 - Height from camera to ground

Set up Camera via app



- Log into app and proceed with configuration
- Reference Quick Start Guide for app instruction.



LED Indicator

LED Indication

- Low Voltage
- Power on / Booting
- Power on—Operational
- Event Create
- Serial Comm Issue

Device Malfunction

- General
- Check Memory Card
- Angle Adjustment X
- Check Camera Connection



LED Flash Count

GPS

x3 Low GPS signal

Network

x1 Sim Error

x2 No Network

x3 Unable to register w/network

x5 Service activation error

x6 Service sync failure

Power

x4 Low Battery

x5 Error reading diagnostics

x10 Other system error

Error Codes

To check the system status press and hold the **multi-function button** for 2-4s; release when the GPS LED illuminates.

Errors will be displayed as seen above

Tracking Unit Installation

Hold for system diagram

-
- Plug the camera harness into the kit harness
 - Plug the kit harness into the diagnostic harness
 - Plug the diagnostic harness in to the tracking unit

xxx

-
- xxx

-
- xxx

Hold for Magnum AVL about us statement and
or sup-port info

**Magnum
Electronics, Inc.**
302-734-9250

dave.lange@magnumelectronics.com